



LUMINAIRE TESTING LABORATORY, INC.

SUSTAINING MEMBER
of the
IESNA

905 Harrison Street · Allentown, PA 18103 · 610-770-1044 · Fax 610-770-8912 · www.LuminaireTesting.com

LTL NUMBER: 10346

DATE: 03-20-2006

PREPARED FOR: SCIENTIFIC LIGHTING PRODUCTS

CATALOG NUMBER: M601N-254-HO-T5-PP-ELB-UNI

LUMINAIRE: MOLDED FIBERGLASS HOUSING, FORMED WHITE ENAMEL STEEL REFLECTOR, CLEAR POLYCARBONATE PRISMATIC AND LINEAR PRISMATIC LENS.

LAMPS: TWO 54 WATT HIGH OUTPUT T5 LINEAR FLUORESCENT LAMPS RATED AT 4400 LUMENS EACH.

LAMP CATALOG NUMBER: SYLVANIA FP54/835/HO/ECO

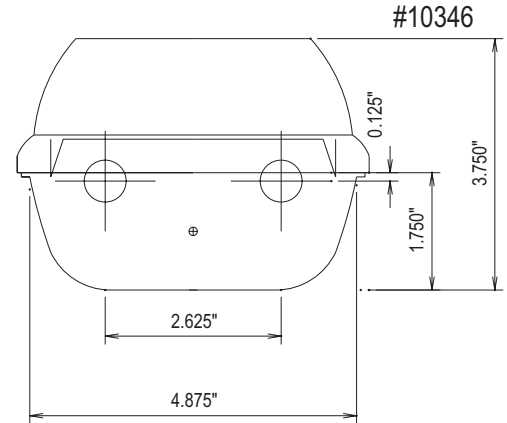
BALLAST: ONE SYLVANIA QTP 2X54T5HO/UNV PSN HT

MOUNTING: SURFACE

LUMEN TO CANDELA RATIO USED = 9.18

TOTAL INPUT WATTS = 100.3 AT 120.0 VOLTS

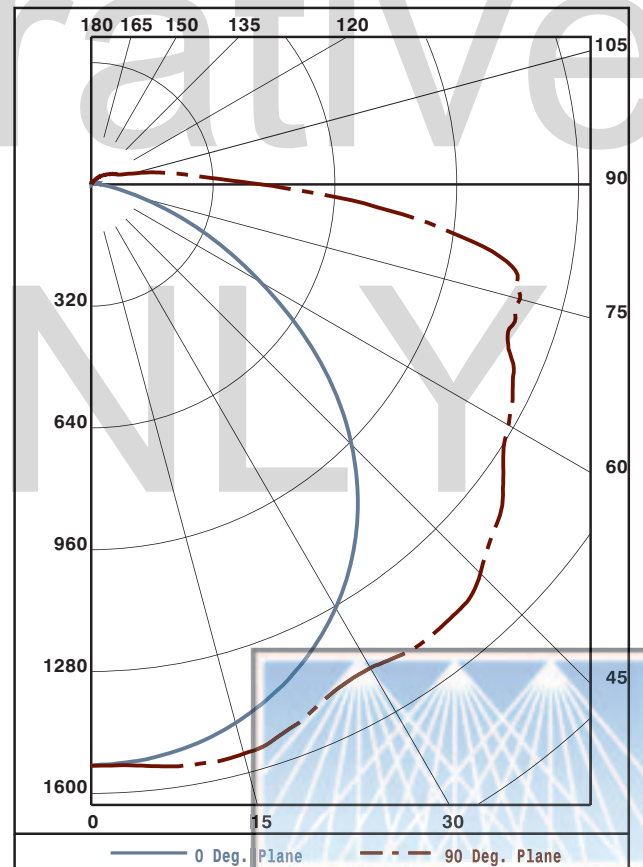
THE 0 DEGREE PLANE IS PARALLEL WITH THE LAMPS.



CANDELA DISTRIBUTION						FLUX
0.0	22.5	45.0	67.5	90.0		
0	1528	1528	1528	1528	1528	
5	1518	1521	1534	1530	1533	146
15	1465	1482	1523	1539	1549	428
25	1359	1387	1438	1465	1481	659
35	1195	1207	1300	1433	1485	828
45	966	983	1249	1406	1445	934
55	672	811	1124	1273	1322	940
65	372	622	932	1143	1222	866
75	139	414	725	1034	1166	750
85	39	251	612	772	783	551
90	23	203	416	453	447	
95	15	106	227	250	267	209
105	17	45	79	99	110	80
115	10	17	50	61	64	42
125	4	5	27	40	44	22
135	2	2	9	22	26	9
145	2	2	2	7	10	3
155	2	2	3	3	3	1
165	2	3	3	3	3	1
175	3	4	3	3	4	0
180	3	3	3	3	3	

ZONAL LUMEN SUMMARY				
ZONE	LUMENS	%LAMP	%FIXT	
0- 30	1233	14.0	19.1	
0- 40	2061	23.4	31.9	
0- 60	3935	44.7	60.8	
0- 90	6102	69.3	94.3	
90-120	331	3.8	5.1	
90-130	352	4.0	5.4	
90-150	364	4.1	5.6	
90-180	367	4.2	5.7	
0-180	6469	73.5	100.0	

TOTAL LUMINAIRE EFFICIENCY: 73.5%
 TOTAL REFLECTANCE OF PAINT: 86.8%
 CIE TYPE: DIRECT
 PLANE: 0-DEG 90-DEG
 SPACING CRITERIA: 1.2 1.5



TESTED BY HERSCHEL SCHRECK
 CHECKED BY MIKE GRATHER



LUMINAIRE TESTING LABORATORY, INC.

SUSTAINING MEMBER of the IESNA

905 Harrison Street · Allentown, PA 18103 · 610-770-1044 · Fax 610-770-8912 · www.LuminaireTesting.com

LTL NUMBER: 10346

DATE: 03-20-2006

PREPARED FOR: SCIENTIFIC LIGHTING PRODUCTS

COEFFICIENTS OF UTILIZATION - ZONAL CAVITY METHOD
EFFECTIVE FLOOR CAVITY REFLECTANCE 0.20

Table with columns RC, RW, and rows for angles 80, 70, 50, 30, 10, 0. Values range from 35 to 87.

PLANE: 0-DEG 90-DEG
LUMINOUS LENGTH: 49.500 4.875
HEIGHT OF SIDE: 1.750 1.750

LUMINANCE IN CANDELA PER SQUARE METER
ANGLE AVERAGE AVERAGE AVERAGE

Table with columns IN DEG, 0-DEG, 45-DEG, 90-DEG. Values range from 2221 to 9814.





LUMINAIRE TESTING LABORATORY, INC.

SUSTAINING MEMBER of the IESNA

905 Harrison Street · Allentown, PA 18103 · 610-770-1044 · Fax 610-770-8912 · www.LuminaireTesting.com

LTL NUMBER: 10346
PREPARED FOR: SCIENTIFIC LIGHTING PRODUCTS

DATE: 03-20-2006

CANDELA DISTRIBUTION

Table with 6 columns of candela values for various angles from 0.0 to 180 degrees.

ZONAL LUMEN SUMMARY

Table with 2 columns: Zonal angle ranges and corresponding lumen values.

THIS TEST WAS CONDUCTED USING RELATIVE PHOTOMETRY TECHNIQUES ACCORDING TO STANDARD IESNA PROCEDURES. THE USER MUST THEREFORE USE CAUTION IN THE FOLLOWING SITUATIONS: 1) THIS TEST WAS PERFORMED USING A SPECIFIC BALLAST/LAMP COMBINATION. EXTRAPOLATION OF THESE DATA FOR OTHER BALLAST/LAMP COMBINATIONS MAY PRODUCE ERRONEOUS RESULTS. 2) ACCORDING TO IESNA PROCEDURES, THE BALLAST(S) AND LAMP(S) ARE PRESUMED TO PRODUCE 100% OF RATED OUTPUT. AN APPROPRIATE BALLAST FACTOR MUST BE APPLIED TO THE LUMEN OUTPUT RATINGS AND LUMINOUS INTENSITY VALUES GIVEN. 3) THIS TEST WAS CONDUCTED IN A CONTROLLED LABORATORY ENVIRONMENT WHERE THE AMBIENT TEMPERATURE WAS HELD AT 25°C ±1°C. FIELD PERFORMANCE MAY DIFFER PARTICULARLY IN REGARDS TO CHANGE IN LUMINOUS OUTPUT AS A RESULT OF DIFFERENCE IN AMBIENT TEMPERATURE AND METHOD OF MOUNTING THE LUMINAIRE.

