



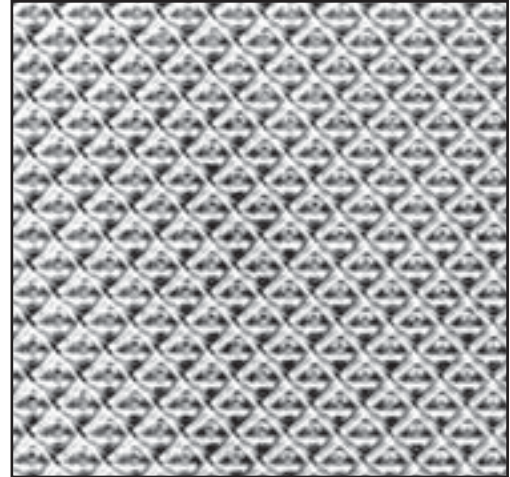
# PATTERN 12

## EXTRUDED LENS

# PR12

### 3/16" - 4,7mm FEMALE PRISM

Prismatic Pattern 12 is undoubtedly the most widely recognized lighting medium available. This extruded lens features .187" (4,7mm) female prisms that offer excellent efficiencies while maintaining 87% of the light output in the 0-60 degree zone. PR12 is available in numerous thicknesses, materials and panel sizes.



Three Standard Thicknesses:  
 .100" / 2,5mm  
 .110" / 2,8mm  
 .125" / 3,2mm

### PATTERN 12 PRISMATIC LENS

3/16" (4,7mm) CONICAL FEMALE PRISM

CLEAR ACRYLIC					
NOMINAL SIZE	DIMENSIONAL SIZE	THICKNESS	PART #	PCS/CTN.	CTN. WT.
<b>2X4</b>	23-3/4" X 47-3/4"	.100" / 2,5mm	PR12-24-100	20	40LBS/18,1KG
		.110" / 2,8mm	PR12-24-110	30	69LBS/31,3KG
		.125" / 3,2mm	PR12-24-125	25	81LBS/36,7KG
	22-1/2 X 46-1/2	.100" / 2,5mm	PR12-24-100X	20	38LBS/17,2KG
		.110" / 2,8mm	PR12-24-110X	30	67LBS/30,4KG
		.125" / 3,2mm	PR12-24-125X	25	78LBS/35,4KG
<b>2X2</b>	23-3/4 X 23-3/4	.100" / 2,5mm	PR12-22-100	40	40LBS/18,1KG
		.110" / 2,8mm	PR12-22-110	60	69LBS/31,3KG
		.125" / 3,2mm	PR12-22-125	50	81LBS/36,7KG
<b>1X4</b>	11-3/4" X 47-3/4"	.100" / 2,5mm	PR12-14-100	40	40LBS/18,1KG
		.110" / 2,8mm	PR12-14-110	60	69LBS/31,3KG
		.125" / 3,2mm	PR12-14-125	50	81LBS/36,7KG
<b>4 X 8</b>	50" X 100"	.125" / 3,2mm	PR12-50100-125	50	
	50" X 54-1/2"	.125" / 3,2mm	PR12-5054.5-125	25	
STYRENE					
<b>CLEAR</b>	23-3/4" X 47-3/4"	.095" / 2,4mm	PRS12-24-100	20	40LBS/18,1KG
<b>WHITE</b>	23-3/4" X 47-3/4"	.095" / 2,4mm	PRSW12-24-100	20	40LBS/18,1KG
POLYCARBONATE					
<b>2X2</b>	23-3/4" X 23-3/4"	.135" / 3,4mm	PR12-PC-22-135	SPECIAL ORDER	
<b>1X4</b>	11-3/4" X 47-3/4"	.135" / 3,4mm	PR12-PC-14-135		
<b>4X8</b>	48" X 96"	.135" / 3,4mm	PR12-PC-4896-118		

Product offering and specifications subject to change without notice.