



# PARABOLIC ALUMINUM LOUVER

# L14-KD

## 1.4"/35mm DEEP:

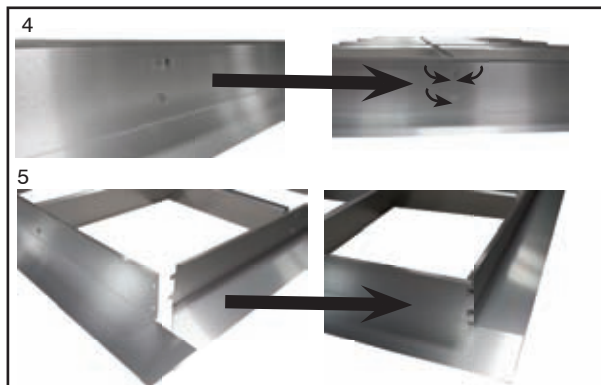
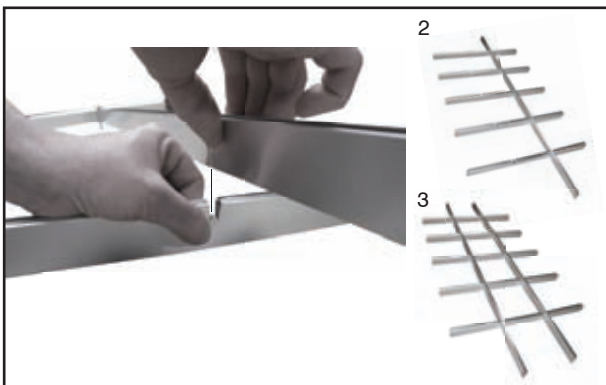
Lumiflux™ 14 is the industry standard 1.4" (35mm) deep parabolic aluminum louver. It is available with a trimmable flange that provides a wide range of finished sizes. L14 is designed to fit most luminaires and is available in the cell configurations that satisfy typical applications. L14-KD components are available in multiple configurations.

Component parts include:

- Cross Blades
- Longitudinal Blades
- Flanges



<b>2 X 4</b> 22-1/2" X 46-1/2" 603 X 1881mm	NUMBER OF CELLS	18	32	78	105
	CELL CONFIGURATION	3X6	4X8	6X13	7X15
	FINISH	SEMI-SPECULAR			
	PART NUMBER	L14-24-18-LC-KD	L14-24-32-LC-KD	L14-24-78-LC-KD	L14-24-105-LC
<b>2 X 2</b> 22-1/2" X 22-1/2" 572 X 572mm	NUMBER OF CELLS	9	16	36	
	CELL CONFIGURATION	3X3	4X4	6X6	
	FINISH	SEMI-SPECULAR			
	PART NUMBER	L14-22-9-LC-KD	L14-22-16-LC-KD	L14-22-36-LC-KD	
<b>1 X 4</b> 11-1/4" X 46-1/2" 286 X 1881mm	NUMBER OF CELLS	16	24	26	
	CELL CONFIGURATION	2X8	3X8	2X13	
	FINISH	SEMI-SPECULAR			
	PART NUMBER	L14-14-16-LC-KD	L14-14-24-LC-KD	L14-14-26-LC-KD	
<b>1 X 2</b> 11-1/4" X 22-1/2" 286 X 572mm	NUMBER OF CELLS	8			
	CELL CONFIGURATION	1X8			
	FINISH	SEMI-SPECULAR			
	PART NUMBER	L14-12-8-LC-KD			



Product offering and specifications subject to change without notice.

**SLP LIGHTING**

PHONE: 636.600.4084 | 800.248.0224 FAX: 636.600.4108

www.slplighting.com V020112