



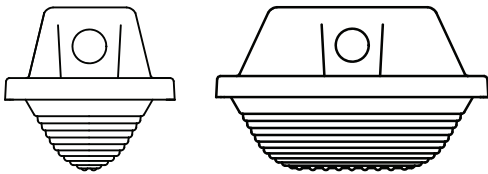
CITADEL 2™ GASKETED ENCLOSURE

CT2

DIFFUSERS AND OPTICALLY CLEAR LENS

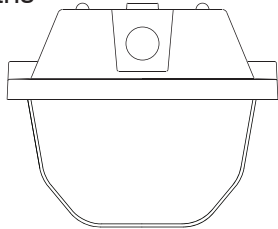
Lineal Ribbed Diffusers for the Citadel 2™

- Very tough diffusers resist breakage to reduce replacement and maintenance costs.
- 4 and 8 Foot Lengths
- 3.62" and 6.40" Wide



Optically Clear Lens for the Citadel 2™

- Designed Specifically for use with Reflectors
- Injection Molded with 100% Impact Resistant Acrylic
- 4 and 8 Foot Lengths
- Deep Lens
- Integral Posts for Lens Safety Tether
- Frosted ends
- SLP Exclusive Guardian Seal™



Before and After



Steps:



1. Remove existing diffuser and lamps



2. Attach a New Basic or Wide Reflector to the existing gear tray



3. Pop your lamps back into place



4. Place New LIRA Optically Clear Lens on fixture and latch closed.



Citadel 2™ Diffusers

WIDTH	LENGTH	DESIGN	MATERIAL	PART #	PCS/CTN	WT/CTN	FULL SKID QTY.
NARROW (1 LAMP)	2'	LINEAL RIBBED	CLEAR POLYCARBONATE	CT2-DP-1L2			
	4'		CLEAR POLYCARBONATE	CT2-DP-1L4	30	17LBS/7,7KG	
	2'	INTERNAL PRISMS	CLEAR POLYCARBONATE	*CT2-DIMP-1L2			
	4'		CLEAR POLYCARBONATE	*CT2-DIMP-1L4	60	74LBS/33,6KG	360
WIDE (2 OR 3 LAMP)	2'	LINEAL RIBBED	CLEAR POLYCARBONATE	CT2-DP-2L2	240		1440
	4'		CLEAR POLYCARBONATE	CT2-DP-2L4	20	21LBS/9,5KG	360
	4'		HI IMPACT CLEAR ACRYLIC	CT2-DIRA-2L4	20	38LBS/17,2KG	360
	8'		HI IMPACT CLEAR ACRYLIC	CT2-DIRA-2L8	10	40LBS/18.14KG	300
	2'	INTERNAL PRISMS	CLEAR POLYCARBONATE	CT2-DIMP-2L2	80		480
	4'		CLEAR POLYCARBONATE	CT2-DIMP-2L4	40	74LBS/33,6KG	240
	4'	OPTICALLY CLEAR	IMPACT RESISTANT ACRYLIC	CT2-LIRA-2L4	20	50LBS/22,6KG	260
	8'		IMPACT RESISTANT ACRYLIC	CT2-LIRA-2L8	10	48LBS/21.7KG	240
	4'	FROSTED LENS	IMPACT RESISTANT ACRYLIC	CT2-LIRA-2L4-FR50	20	50LBS/22,6KG	260

*Special Order Only

Product offering and specifications subject to change without notice.

SLP LIGHTING

PHONE: 636.600.4084 | 800.248.0224 FAX: 636.600.4108

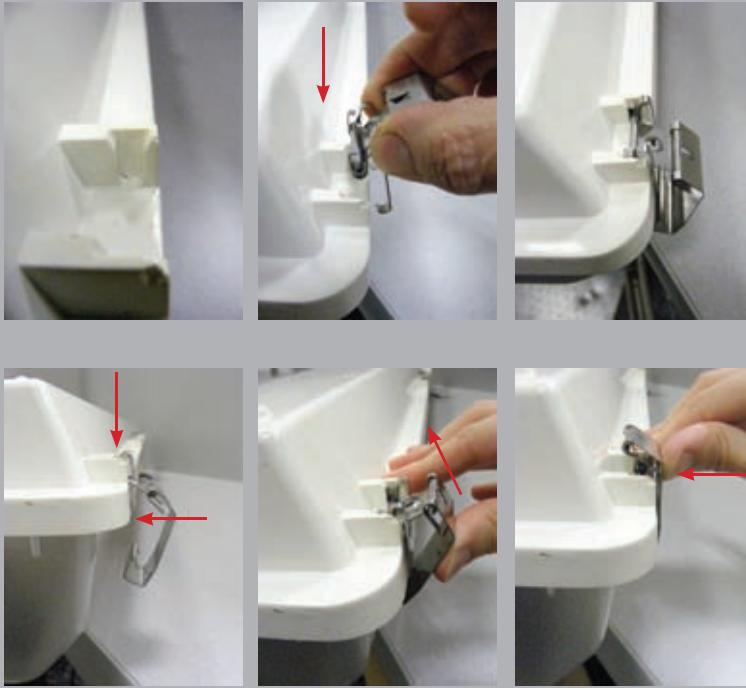
www.slplighting.com V020112



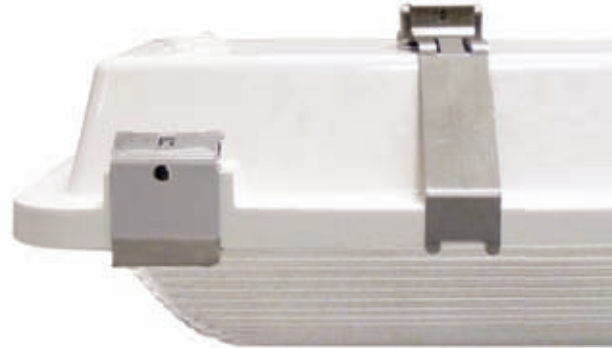
CITADEL 2™ GASKETED ENCLOSURE

CT2

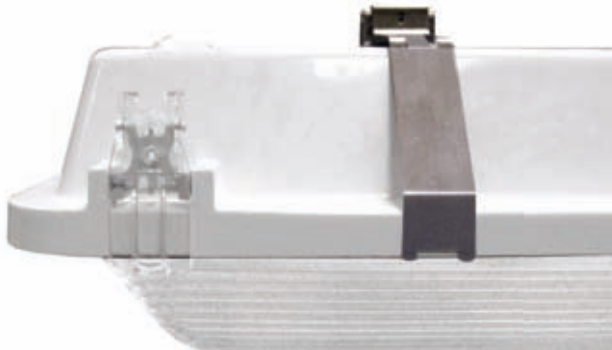
LATCH INSTALLATION



STAINLESS STEEL LATCH



POLYCARBONATE LATCH



Mounting is a snap with the Citadel 2™ Stainless Steel mounting brackets. No holes through the housing!

CITADEL 2™ HARDWARE

		MATERIAL	PART #	PCS/CTN	WT/CTN
Latches	4' WITH ENDPLUGS	STAINLESS	CT2-LATCH4SS	175	37LBS/16,9KG
	8' WITH ENDPLUGS	STAINLESS	CT2-LATCH8SS	100	35LBS/15,9KG
	2' WITH ENDPLUGS	POLYCARBONATE	CT2-LATCH2C	250	29LBS/13,2KG
	4' WITH ENDPLUGS	POLYCARBONATE	CT2-LATCH4C	225	31LBS/14KG
	8' WITH ENDPLUGS	POLYCARBONATE	CT2-LATCH8C	150	33LBS/15KG
MOUNTING BRACKETS	NARROW MOUNTING BRACKET*	STAINLESS STEEL	CT2-MB-1L	250	9LBS/4,1KG
	WIDE MOUNTING BRACKET*	STAINLESS STEEL	CT2-MB2L	250 & 400	12LBS/5,4KG 18KLS/8,2KG
	PRE PACKAGED 2 PER BAG	STAINLESS STEEL	CT2-MB-2L-2		
	CHAIN HANG: MOUNTING BRACKET BAIL	STAINLESS STEEL	CT-BAIL	5600	27LBS/12,2KG
* TWO MOUNTING BRACKETS REQUIRED PER HOUSING					
GEARTRAY RETAINER CLIPS			CT-RC	1000 & 2800	16LBS/7,3KG 41KLS/18,6KG
GEARTRAY RETAINER CLIP SCREWS (100 PER BAG)			CT-SCRW	100	52LBS/23,6KG
ENDPLUGS			CT-ENDPLUG	3000	22LBS/10KG
GEARTRAY SAFETY STRAPS (100 PER BAG)			CT-SST	100	17LBS/7,7KG
LENS TETHER (20 PER BAG)			CT-LT12	20	17LBS/7,7KG

Product offering and specifications subject to change without notice.

SLP LIGHTING

PHONE: 636.600.4084 | 800.248.0224 FAX: 636.600.4108

www.slplighting.com V020112



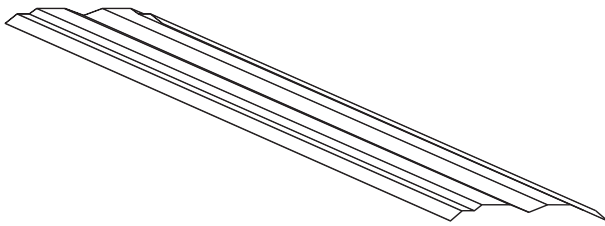
CITADEL 2™ REFLECTORS

CT2R

Reflectors for the Citadel 2™ Housing

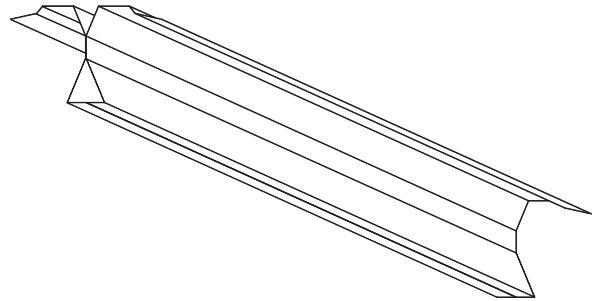
Two Reflector Designs: Basic and Wide Distribution
Both with Enhanced Specular Finish - Minimum 92% Reflectivity
For use with T5 and T8 Lamps

Basic Reflector:

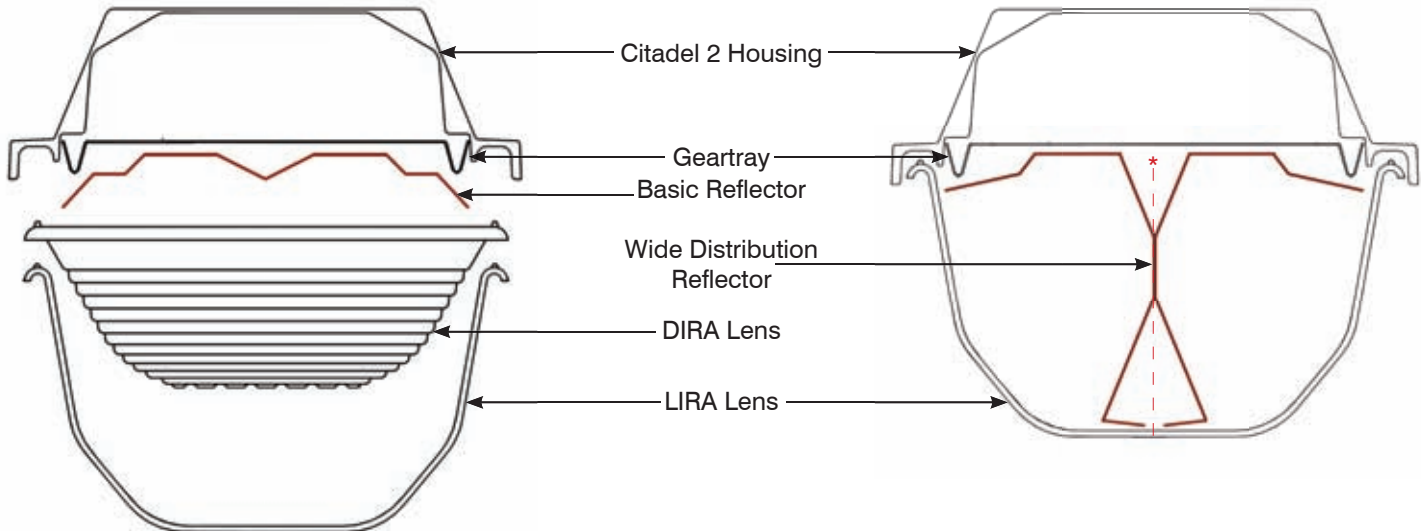


* Basic Reflector for use with a shallow or deep lens.

Wide Distribution Reflector:



* Reflector is a 2 piece assembly.



Product	Part Number	Length	Quantity Required Per Enclosure		Compatible with SLP's		Carton QTY	Carton Weight
			4 Foot	8 Foot	DIRA Lens	LIRA Lens		
Basic	CT2-RF-2L4-B	44.5"	1	2	√	√	750	320
Wide	CT2-RF-2L4-W	44.5"	2	4		√	375	180

Product offering and specifications subject to change without notice.

SLP LIGHTING

PHONE: 636.600.4084 | 800.248.0224 FAX: 636.600.4108

www.slplighting.com V020112